

### Building Pathway to Transformation

- Using key messages to shape sessions to create a sense of progression towards transformation.
- Catalytic grants for the demand side are overdue.
- Youth Leadership delegates from farms need to be vocal.
- Sharing key messages from farmers early and often is essential.
- Creating collaborative and democratic connections between researchers and farmers is evolving.

### Characteristics of Locally Led Adaptation

- Gender balanced.
- Co-organised: involving multiple organisations from planning to performance.
- Creative methods encouraging local experimentation.
- Interactive emphasis on dialogue between farmer, consumer, and market.
- Promotes local, global south voices, and perspectives.

AIDMI work on Locally Led Adaptation on Farms is evolving with farmers, local farm stakeholders, and policymakers.



# LOCALLY LED ADAPTATION BY FARMERS



## ALL INDIA DISASTER MITIGATION INSTITUTE

411 Sakar Five, Behind Old Natraj Cinema, Ashram Road, Ahmedabad-380 009 India.

Tele/Fax: +91-79-2658 2962

E-mail: [bestteam@aidmi.org](mailto:bestteam@aidmi.org). Website: [www.aidmi.org](http://www.aidmi.org), [www.southasiadisasters.net](http://www.southasiadisasters.net)

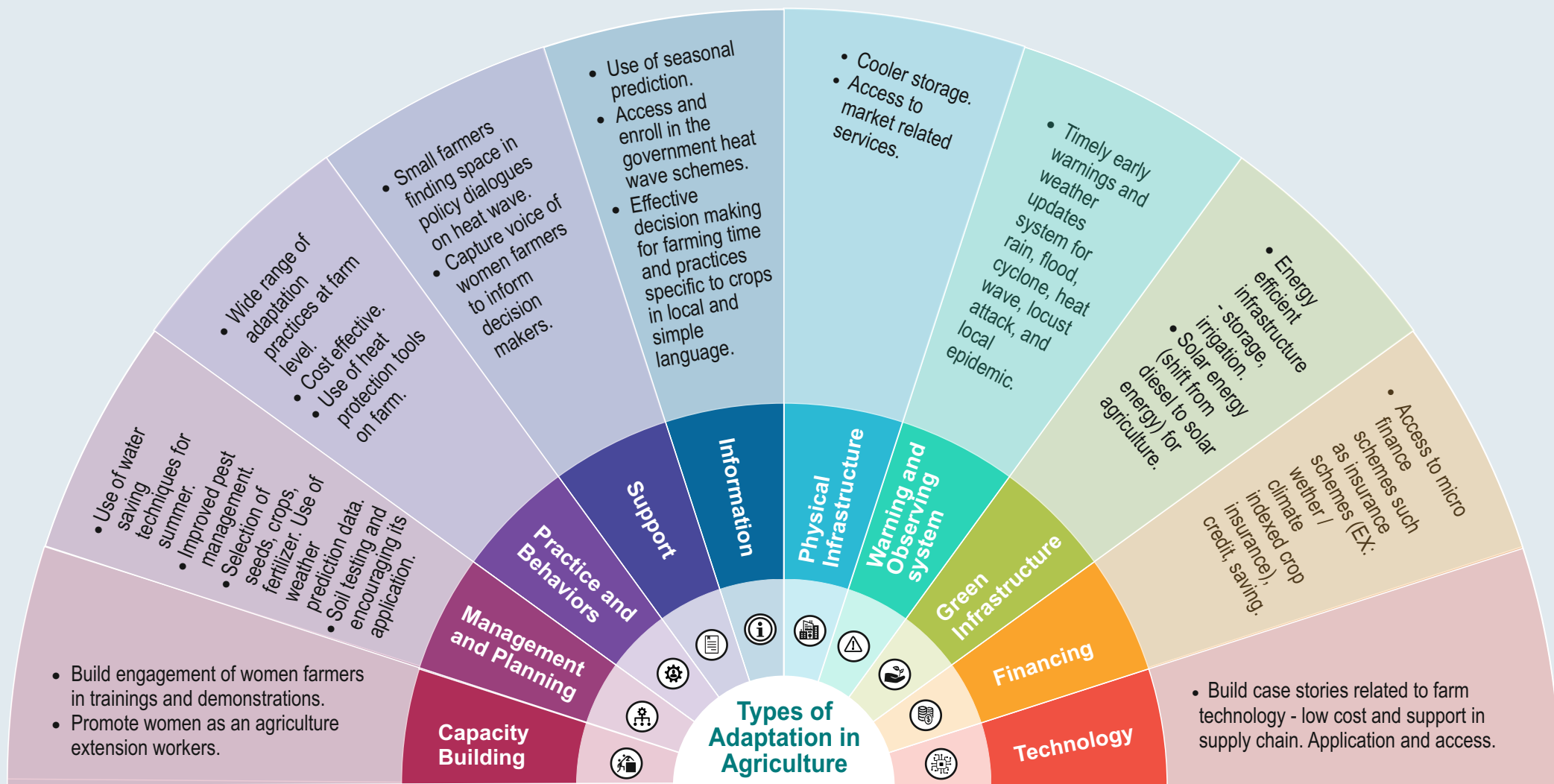
Follow us on:  @AIDMI\_ORG  aidmi\_org  AIDMI.ORG

February 2023



ALL INDIA DISASTER MITIGATION INSTITUTE





Types of Adaptation in Agriculture and relevant measures coming out from the appreciative inquiry.

Based on Biagini et al (2014).

### Farms Adaptations

Adaptation is not new to agriculture. Agricultural farms are our day-to-day and season-to-season adaptation laboratories. If a farmer does not adapt the farm does not exist. If the farm does not exist, the farmer does not exist. And if the farmer does not exist, the farmer's family does not exist. And if farmers and farms both do not exist, we all do not exist. And still there is very limited focus on farms and farmers in adaptation related data, debate, discussion, and decisions. As a result, AIDMI responded to the demand from the local farmers and their organisations to develop AIDMI work mainly around dialogue, data,

digitisation, decision making, and demands for and by farmers for sustainable agriculture.



### Locally Led Adaptation in Agriculture

- Demand for climate finance for agriculture resilience is huge.
- Need for innovation for agro adaptation is under addressed.
- Nature based agro solutions need urgent consolidation.
- Young women led agro adaptation paves many ways for transformation.